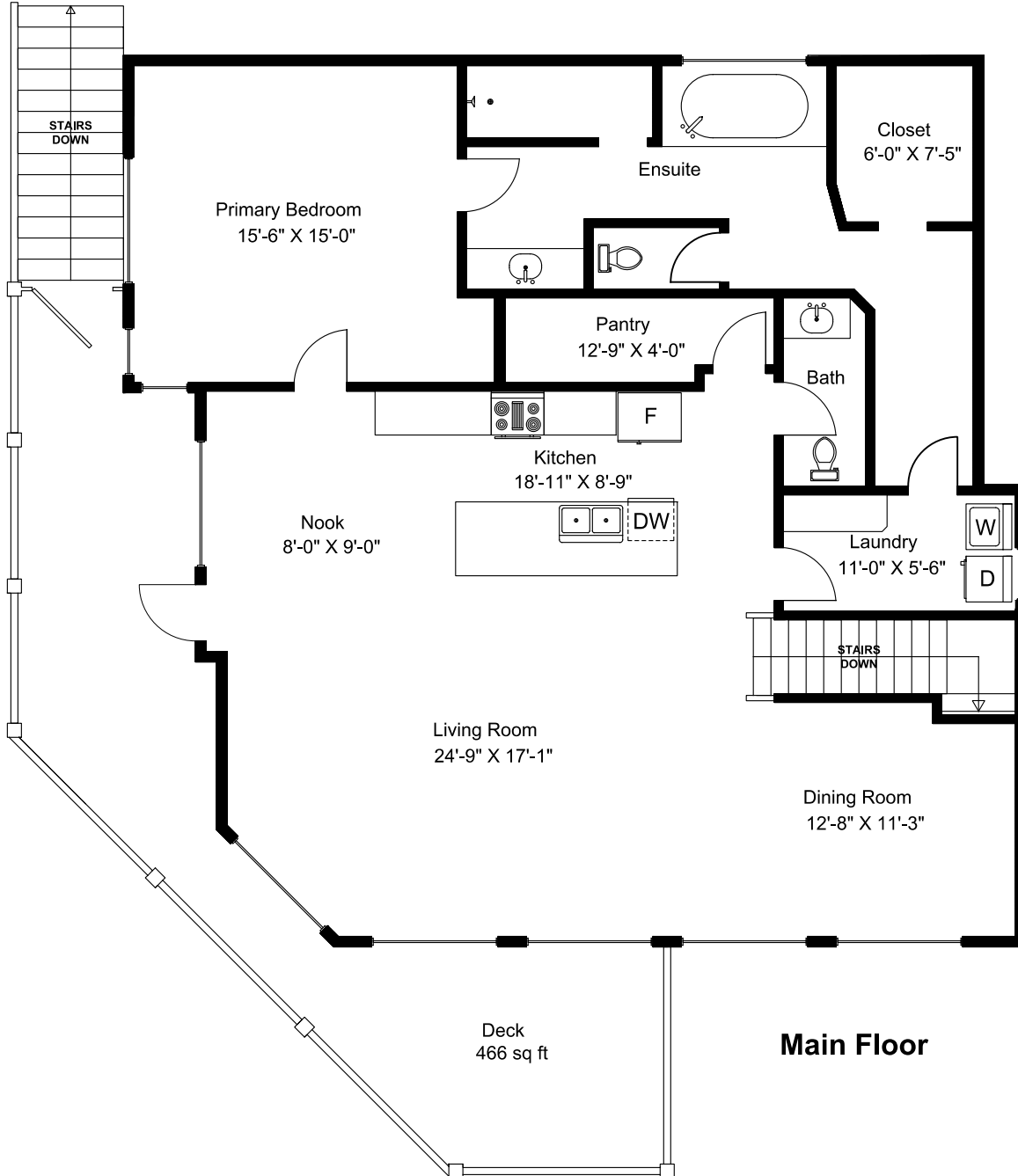
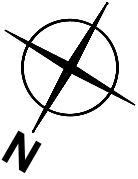


3182 Dolphin Drive



Main Floor = 1660 sq ft
Lower Floor = 1154 sq ft
Total Area = 2814 sq ft
Decks = 1394 sq ft
Garage = 440 sq ft

Dimensions as shown are approximate and should be verified

Prepared for the Exclusive use of
Susan Forrest
Royal LePage - Parkville
as measured on July 25, 2023

3182 Dolphin Drive

