

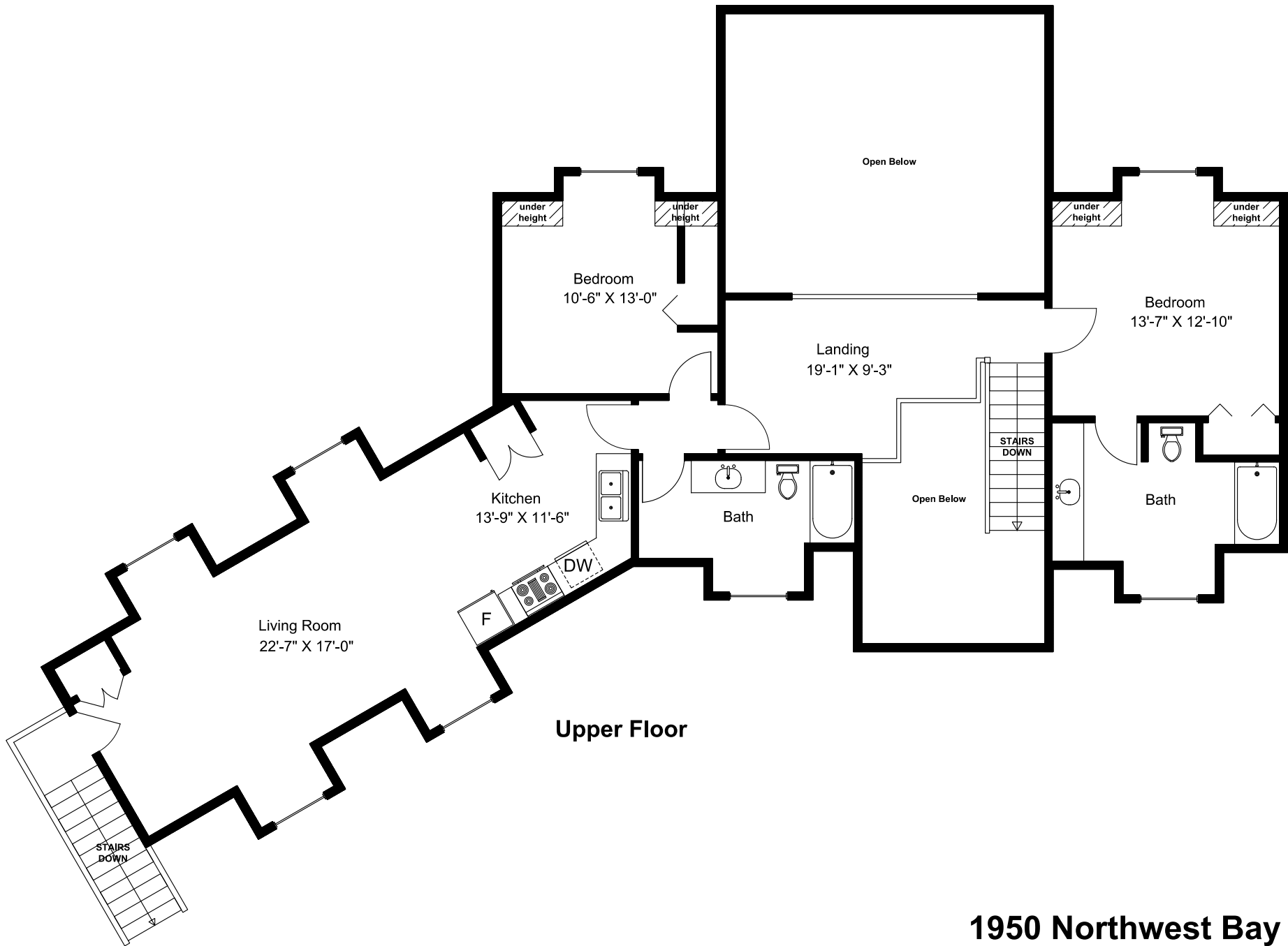
Other & Unfinished
Lower Floor = 386 sq ft
Garages = 798 sq ft
Decks = 573 sq ft
Shop = 1269 sq ft
Greenhouse = 718 sq ft
Pump House = 103 sq ft

Finished
Main Floor = 2032 sq ft
Upper Floor = 1322 sq ft
Lower Floor = 1214 sq ft
Total Area = 4568 sq ft

Dimensions as shown are approximate and should be verified

1950 Northwest Bay Road

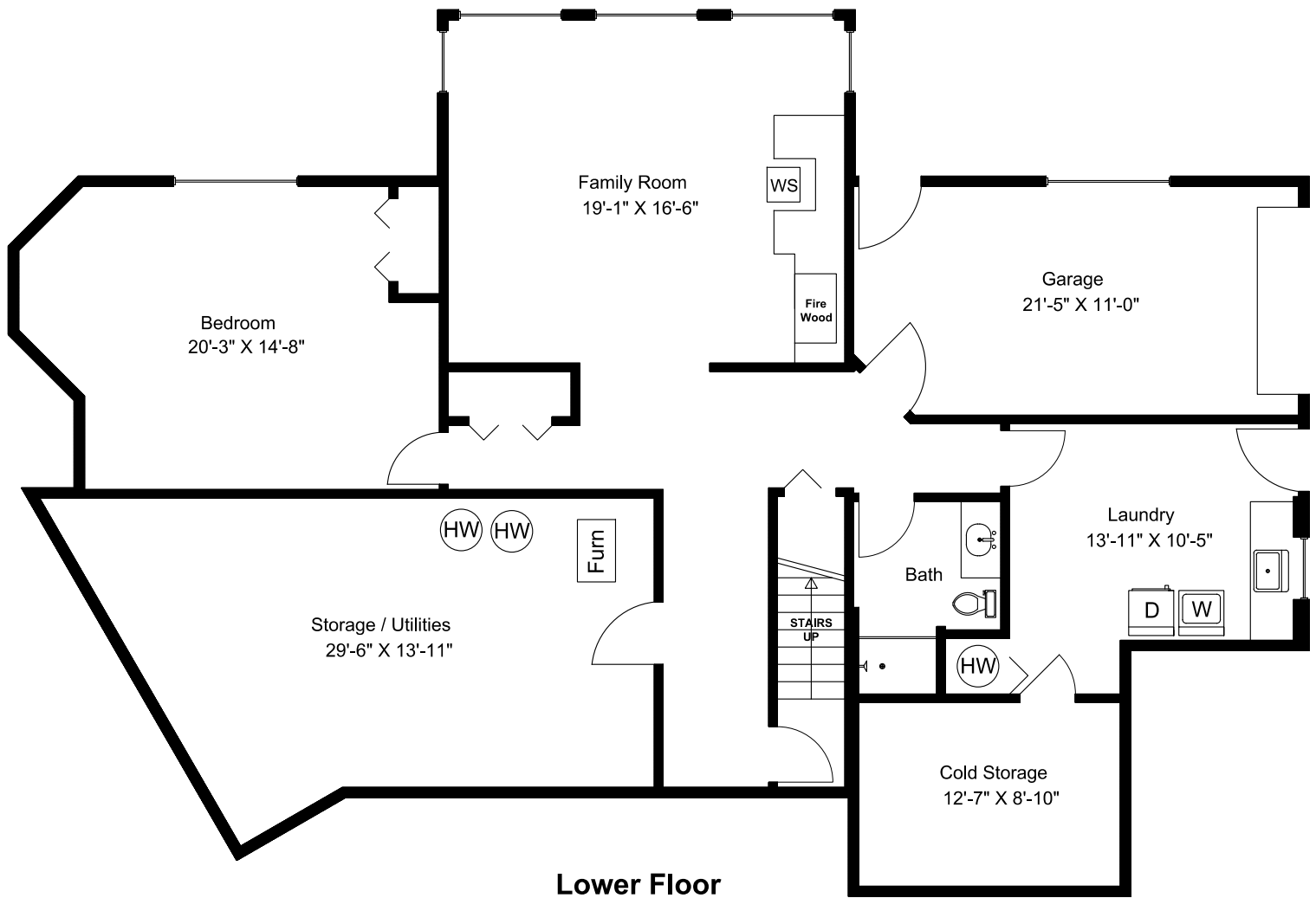
Prepared for the Exclusive use of
Susan Forrest
Royal LePage - Parkville
as measured on July 3, 2024



Upper Floor

1950 Northwest Bay Road

Prepared for the Exclusive use of
 Susan Forrest
 Royal LePage - Parkville
 as measured on July 3, 2024



Lower Floor

1950 Northwest Bay Road

Prepared for the Exclusive use of
 Susan Forrest
 Royal LePage - Parksville
 as measured on July 3, 2024

1950 Northwest Bay Road

